

6TH STD TERM - 2 HALF YEARLY EXAM

Important Short Answers.

Give Short Answers:

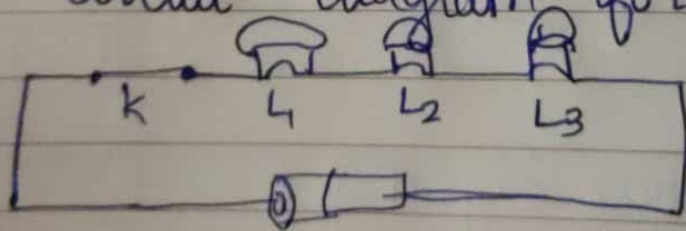
1) Make a list of electrical equipments at home which we get heat from?
 (Ans) The water heater, Iron box, electric kettle etc.

2) What is temperature?
 (Ans) The hotness or coldness of body.

3) Circle odd one out. Give Reason for your choice.
 Switch, Bulb, Battery, Generator

Because Generator produce electricity (or) Others are parts of circuit except Generators.

4) Draw circuit diagram for series connection?



[Book Pg 22].

5) Write Short notes on Conductors and Insulators?
 (Ans) Conductors Conduct electricity Ex Gold, Copper.
 Insulators do not Conduct electricity Ex Plastic, Rubber.

6) Define Slow Change?

(Ans) Changes which take place over long time are Slow changes
Ex Growing of baby.

7) What is Solution?

(Ans) A Solute when dissolved in Solvent become Solution. (or)

Solute + Solvent \rightarrow Solution Ex Sugar Solution

8) Give Reason?

Biscuits kept open on a plate during monsoon days lose its crispness.

(Ans) Because water vapour from atmosphere is absorbed by biscuits.

9) What is atmosphere? Name the layers of atmosphere?

(Ans) Our earth is surrounded by a huge envelope of air called atmosphere.

The atmosphere is made of five layers;

(i) The troposphere

(ii) The stratosphere

(iii) The mesosphere

(iv) The Ionosphere and

(v) The exosphere.

10) How do roots of land plants get Oxygen for breathing?

(Ans) By diffusion.

11) What will happen if you breathe through the mouth?

(Ans) (i) Snoring
(ii) Dry mouth (iii) tiredness
(iv) Poor dental health.

12) Give any three examples of eukaryotic cell?

(Ans) Plants, animals, ~~the~~ most of fungi and algae.

13) Why cells are called building blocks of life?

(Ans) Because, The cell is the structural and functional unit of all living organism.

14) Distinguish between Prokaryotic and Eukaryotic cell?

Prokaryotes	Eukaryotes
(i) Size : 1 to 10 Micron	10 - 100 micron size.
(ii) No definite Nucleus	Have definite Nucleus
(iii) Ex Bacteria	Ex animal cells

15) Arrange in correct sequence
 1) Elephant, Cow, bacteria, Mango, Rose plant.
 (Ans) Bacteria, Mango, Rose plant, cow, elephant.

2) Hen Egg, Ostrich egg, Insect egg.
 (Ans) Insect egg, Hen egg, Ostrich egg.

16) Write the function of epiglottis?
 (Ans) The entry of food into wind pipe is prevented by a flap structure called Epiglottis.

17) Define Trachea?
 (Ans) Trachea is wind pipe that allow passage of air to lungs.

18) Name the important parts of eye?
 (Ans) The eye has three important parts namely Cornea, Iris and Pupil.

19) Name the five important sense organs?
 (Ans) Eyes, Ears, Nose, Tongue and Skin.

20) Why do we sweat more in Summer?
 (Ans) To maintain constant temperature of the body.

21) Differentiate between the Voluntary and Involuntary muscles?

Voluntary
(i) Voluntary muscles can be controlled by our will.
(ii) Ex Muscles of arm.

Involuntary
Involuntary muscles cannot be controlled by our will.
Ex Heart muscles.

22) What are the three types of blood cells?
(Ans) Arteries, Veins, Capillaries.

23) Write short notes on Rib cage?
(Ans) (i) The rib cage has 12 rib bones.
(ii) It protects heart and lungs.

24) Name the parts of computer?
(Ans) Input, CPU, Output.

25) Bring out any two differences between Input and Output devices.

Input	Output
(i) Input devices are controlled by the user.	(i) Output devices are controlled by computer.
(ii) <u>Ex</u> keyboard, Mouse.	<u>Ex</u> Monitor, Printer.

"Best Wishes"