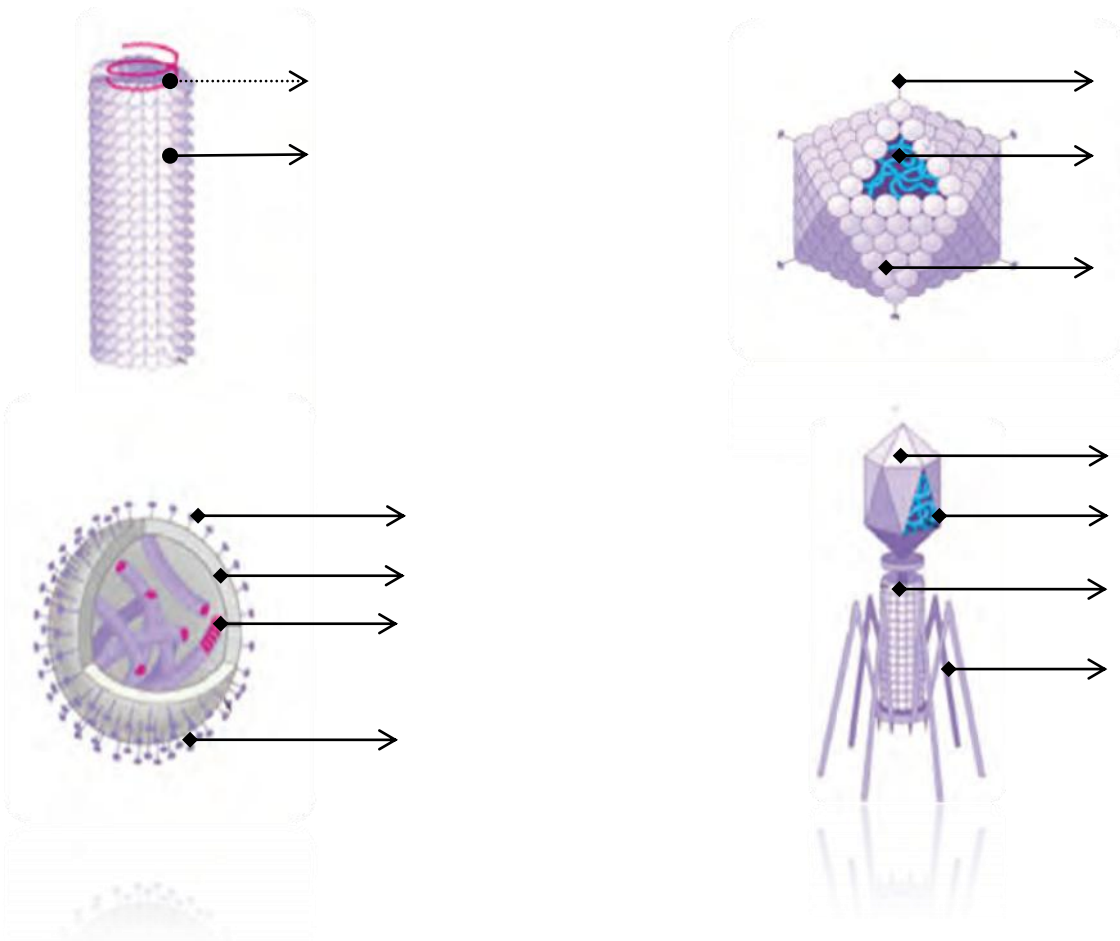
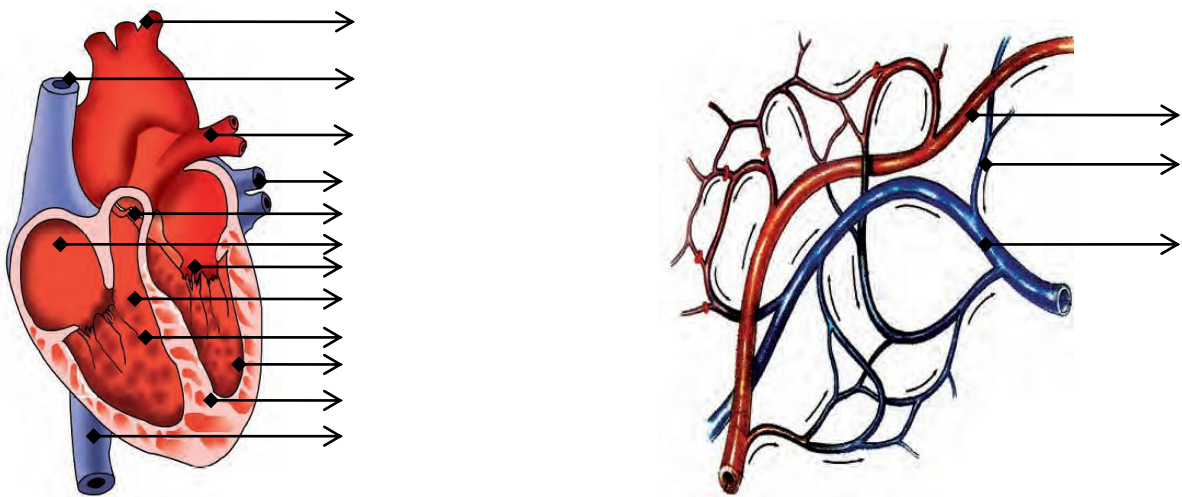
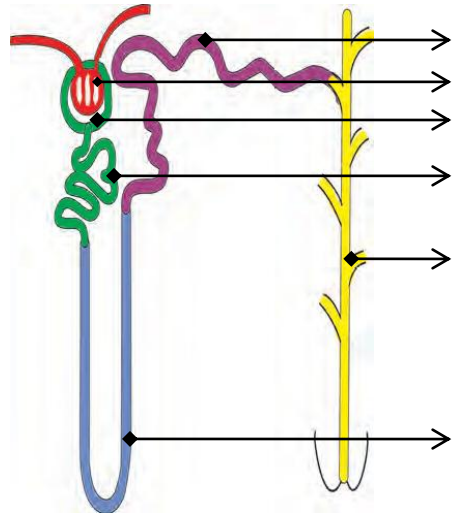
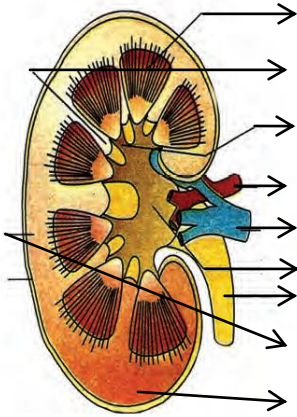
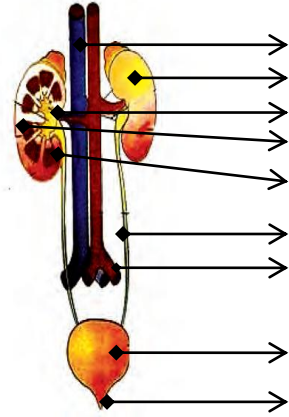
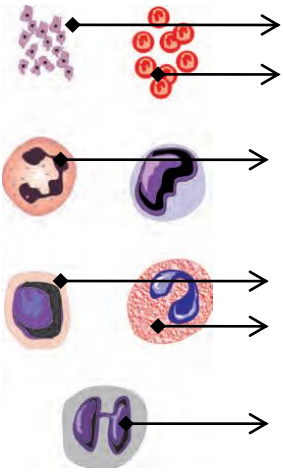


## 2. IMMUNE SYSTEM

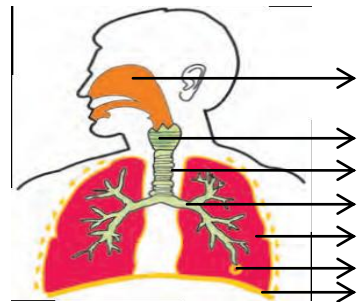
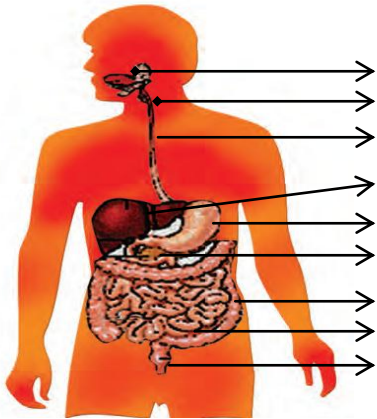


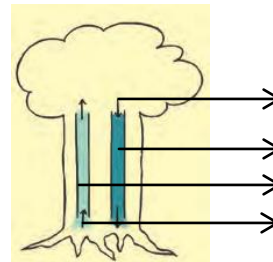
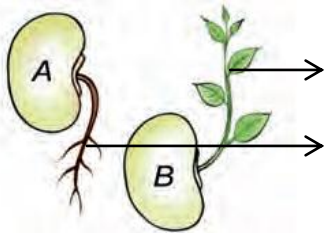
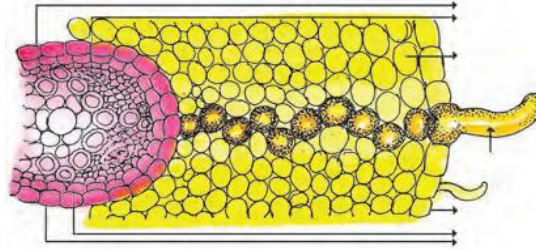
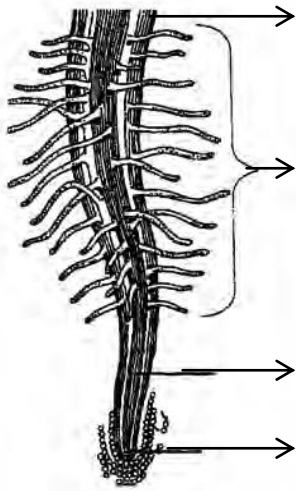
## 5. A REPRESENTATIVE STUDY OF MAMMAL



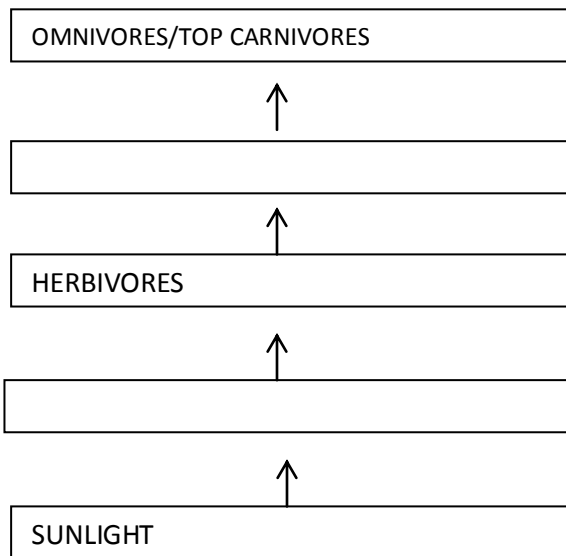


**6. LIFE PROCESS**



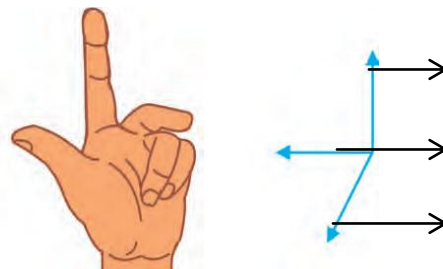
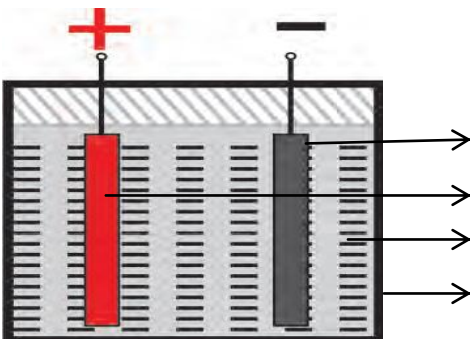
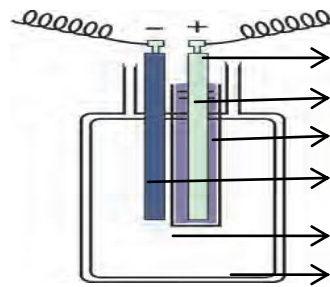
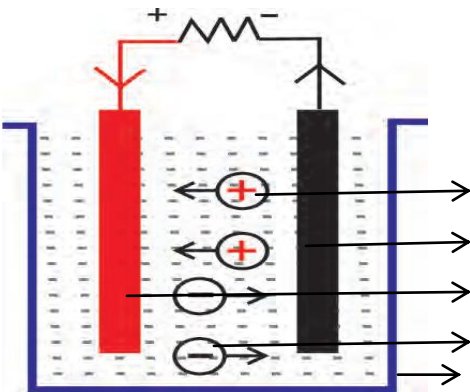
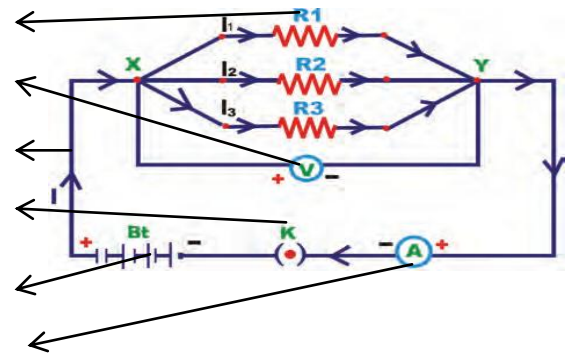
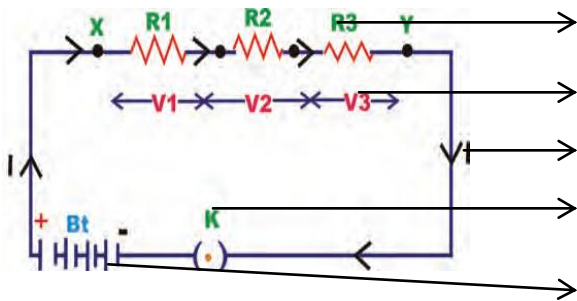
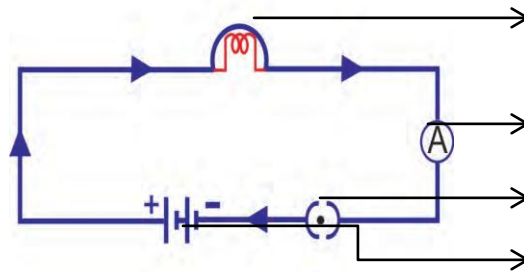
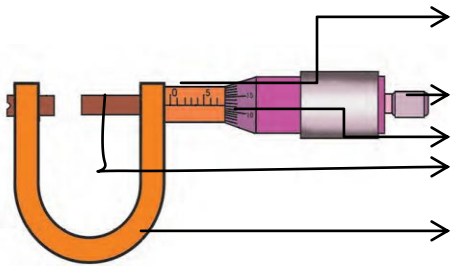


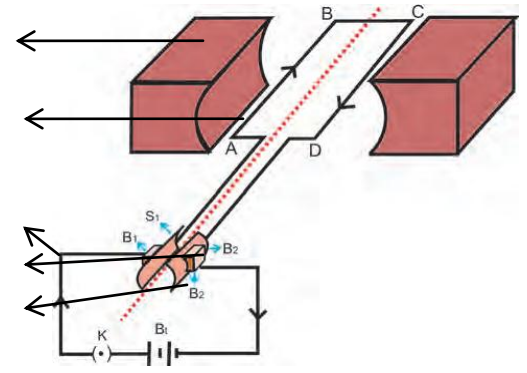
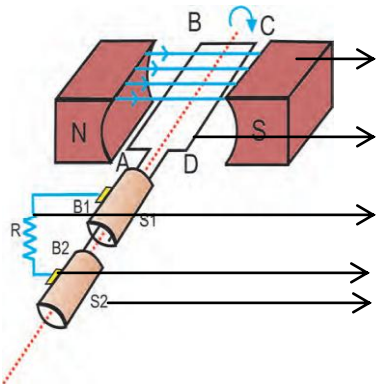
## 7. CONSERVATION OF ENVIRONMENT



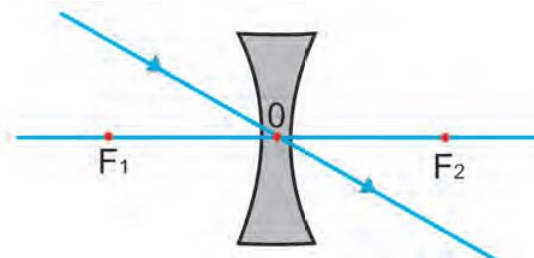
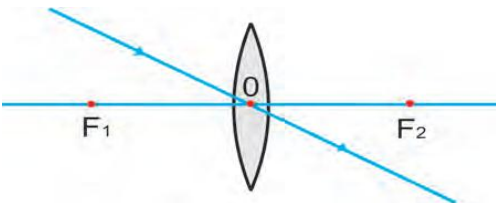
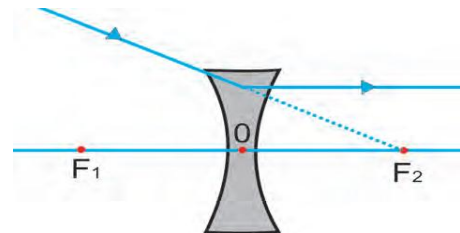
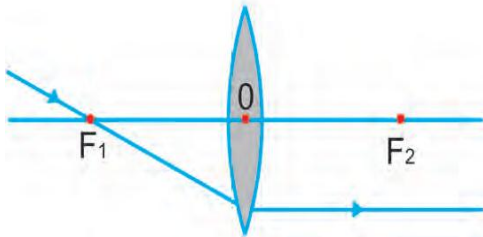
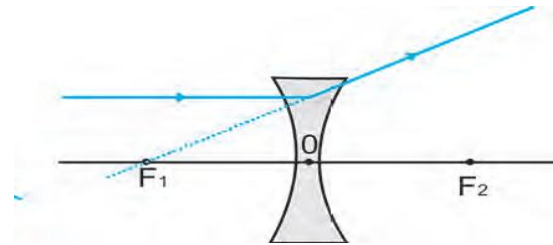
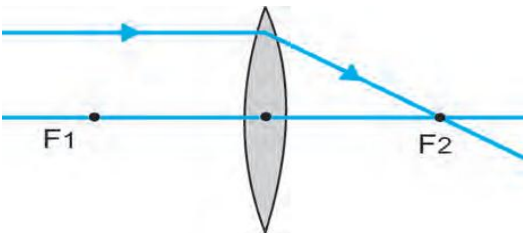
## 14. MEASURING INSTRUMENTS

## 16. ELECTRICITY AND ENERGY

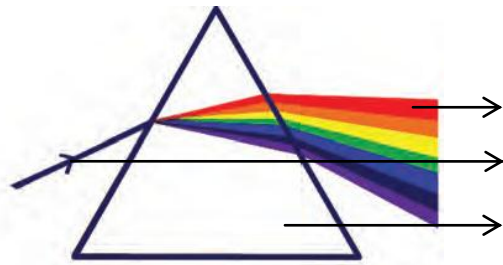
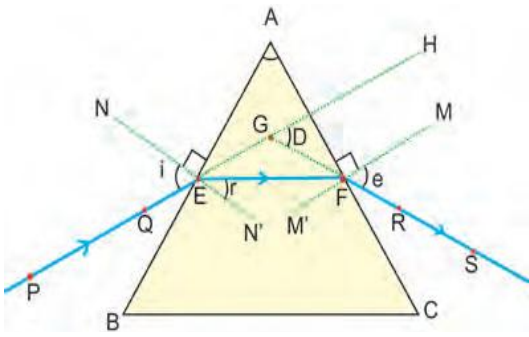




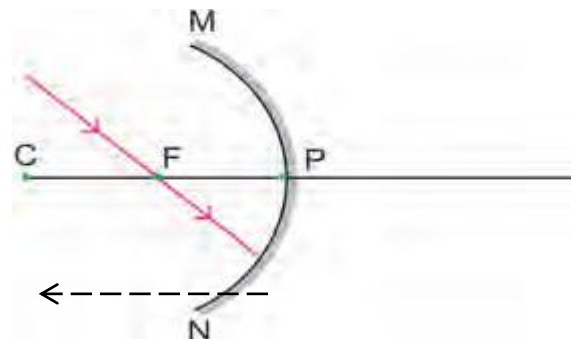
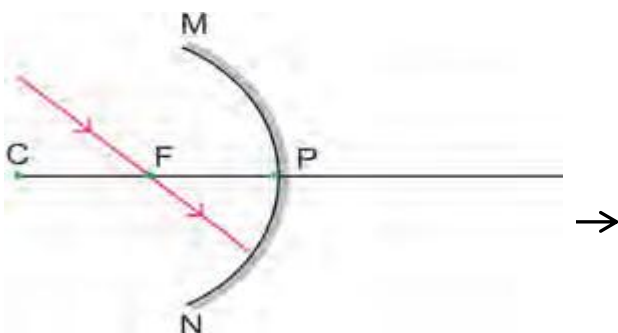
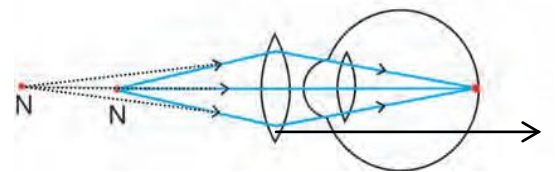
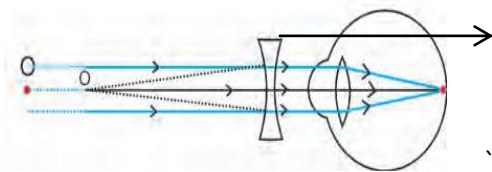
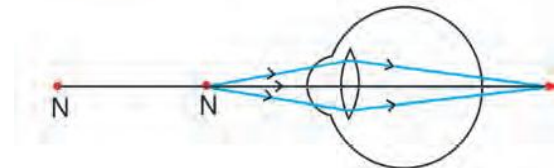
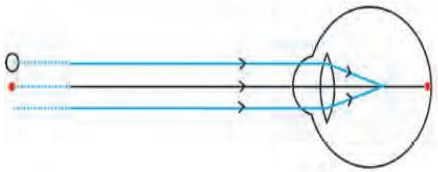
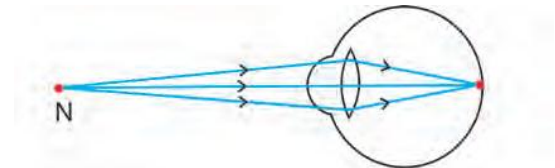
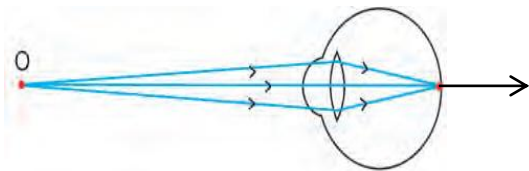
**17. MAGNETIC EFFECT OF ELECTRIC CURRENT AND LIGHT**







- PE
- EF
- FS
- $\angle i$
- $\angle r$
- $\angle D$
- $\angle e$
- $\angle A$



FAZOULDINE.B TGT IAGHSS MUTHIRAPALAYAM PUDUCHERRY

